

CITY OF SURREY

BY-LAW NO. 16934B

A by-law to amend "Surrey Zoning By-law, 1993, No. 12000,"
as amended.

.....

The Council of the City of Surrey, in open meeting assembled, ENACTS AS FOLLOWS:

1. Surrey Zoning By-law, 1993, No. 12000, as amended, is hereby further amended pursuant to the provisions of Section 903 of the *Local Government Act*, R.S.B.C. 1996, c.323, as amended, by changing the classification of the following parcels of land, presently shown upon the maps designated as the Zoning Maps and marked as Schedule "A" under Part 3 of Surrey Zoning By-law, 1993, No. 12000, as amended, as follows:

FROM: ONE-ACRE RESIDENTIAL ZONE (RA)

TO: SINGLE FAMILY RESIDENTIAL (9) COACH HOUSE ZONE (RF-9C)

Portion of Parcel Identifier: 007-238-860, Lot 22 Section 10 Township 2 New Westminster District Plan 35877, shown on a Survey Plan attached hereto and forming part of this by-law as Schedule A, certified correct by John Onderwater B.C.L.S. on the 28th day of February 2009, called Block 2, containing 2,448.5 square metres and more particularly described as follows:

Portion of 14896 – 60 Avenue

2. This By-law shall be cited for all purposes as "Surrey Zoning By-law, 1993, No. 12000, Amendment By-law, 2009, No. 16934B."

PASSED FIRST AND SECOND READING on the 20th day of April, 2009.

PUBLIC HEARING HELD thereon on the 4th day of May, 2009.

PASSED THIRD READING on the 4th day of May, 2009.

RECONSIDERED AND FINALLY ADOPTED, signed by the Mayor and Clerk, and sealed with the Corporate Seal on the 25th day of July, 2011.

_____MAYOR

_____CLERK

**SURVEY PLAN TO ACCOMPANY CITY OF SURREY
 REZONING BYLAW 16934 A/B OF LOT 22 SECTION 10
 TOWNSHIP 2 NWD PLAN 35877**

Schedule A

SCALE 1:750



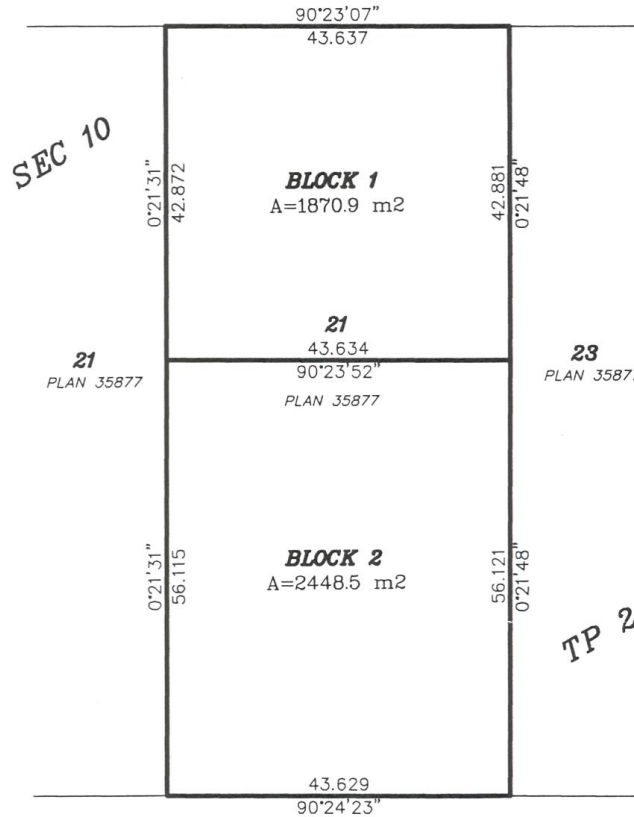
All Distances are in Metres.

CITY OF SURREY

Grid Bearings are derived from
 OCMS 5605 & 5606



60th AVENUE



Onderwater Land Surveying
 B.C. Land Surveyors
 #104-5830 176A Street
 Cloverdale B.C.

FILE: JS0851_RZ

© Certified correct, completed on
 the 28th day of February, 2009.

*This Plan Lies Within The
 Greater Vancouver Regional District*

[Signature]
 B.C.L.S.